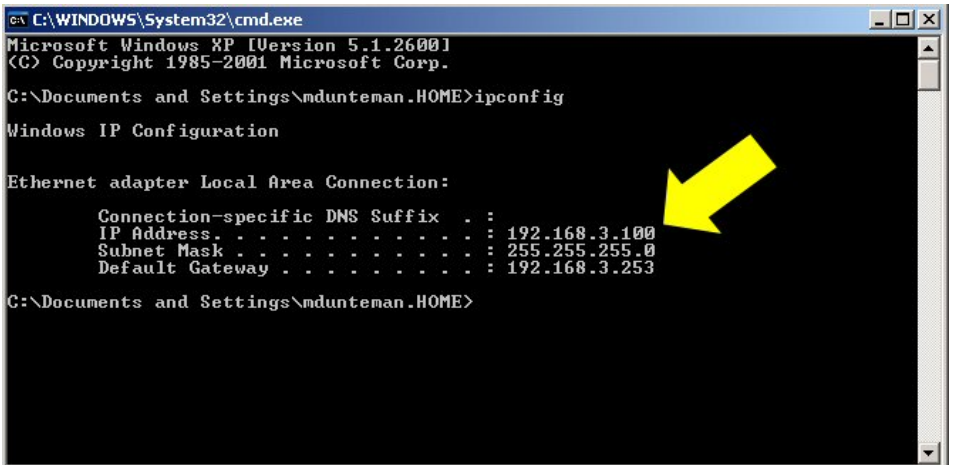
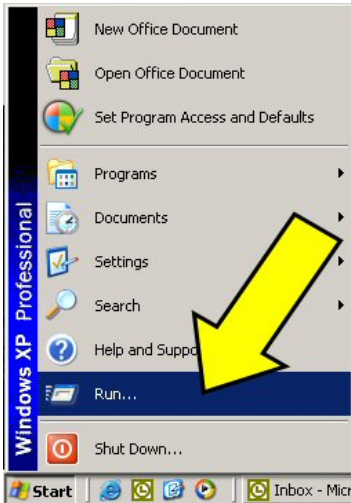


Security Eyes Pro Remote Connection Setup:

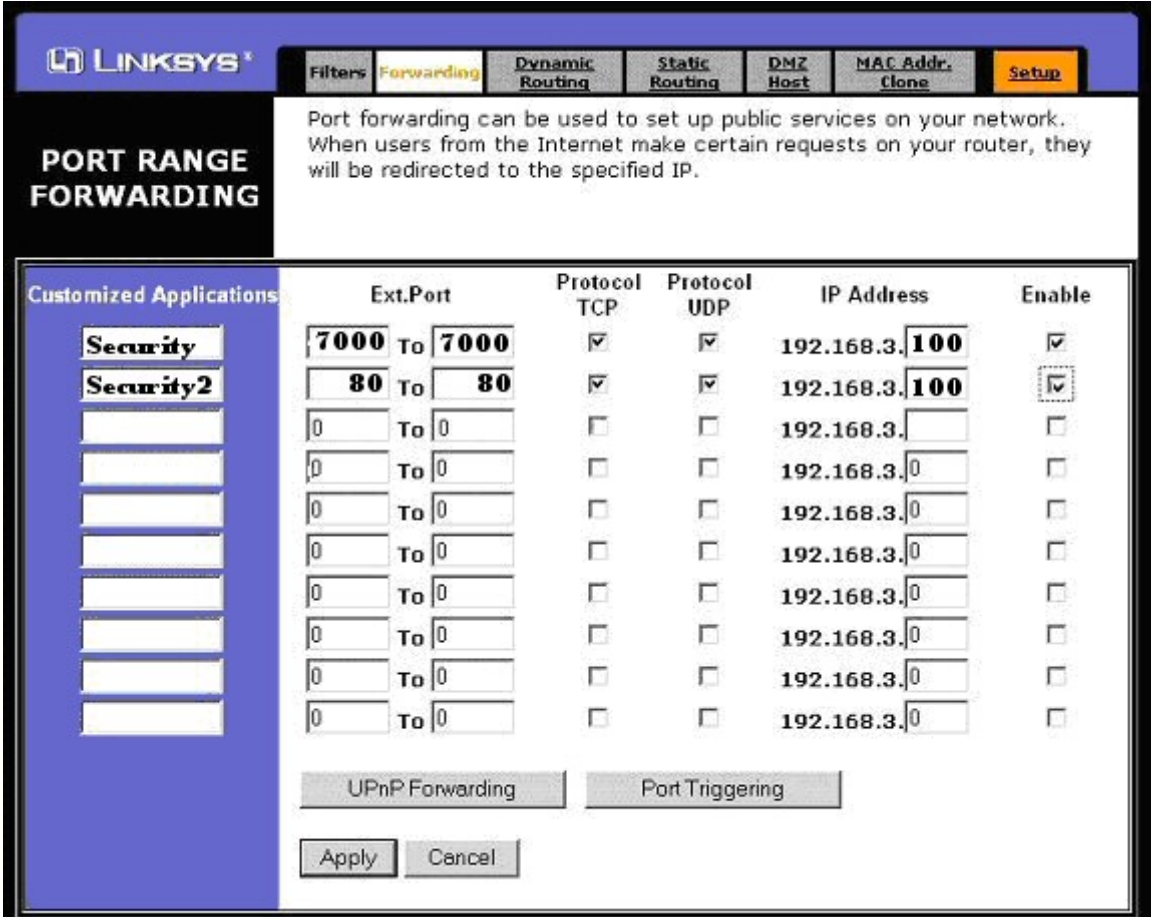
Follow these steps to connect to your Security Eyes Pro DVR Server on a Broadband internet connection from a Remote PC.

A. Get the internal IP address of the server

1. Exit the software into Windows XP
2. Open the Start Menu
3. Press "RUN"
4. Type "CMD"
5. In the window that opens type "IPCONFIG"
6. It will print out a lot of information; you are looking for the IP address of your network card. (for example 192.168.1.1)



B. Now open the Configuration of your Router (you will have to consult the User's manual for your router. Forward Ports 7000 and 80 (TCP and UDP) to the IP address you received above.



This is an example of a LinkSys Router's Forwarding configuration page. Yours may be the same or different depending on the type of router you have. Notice the IP address on the right of the configuration is for the Internal IP for the DVR Server that you found through step A

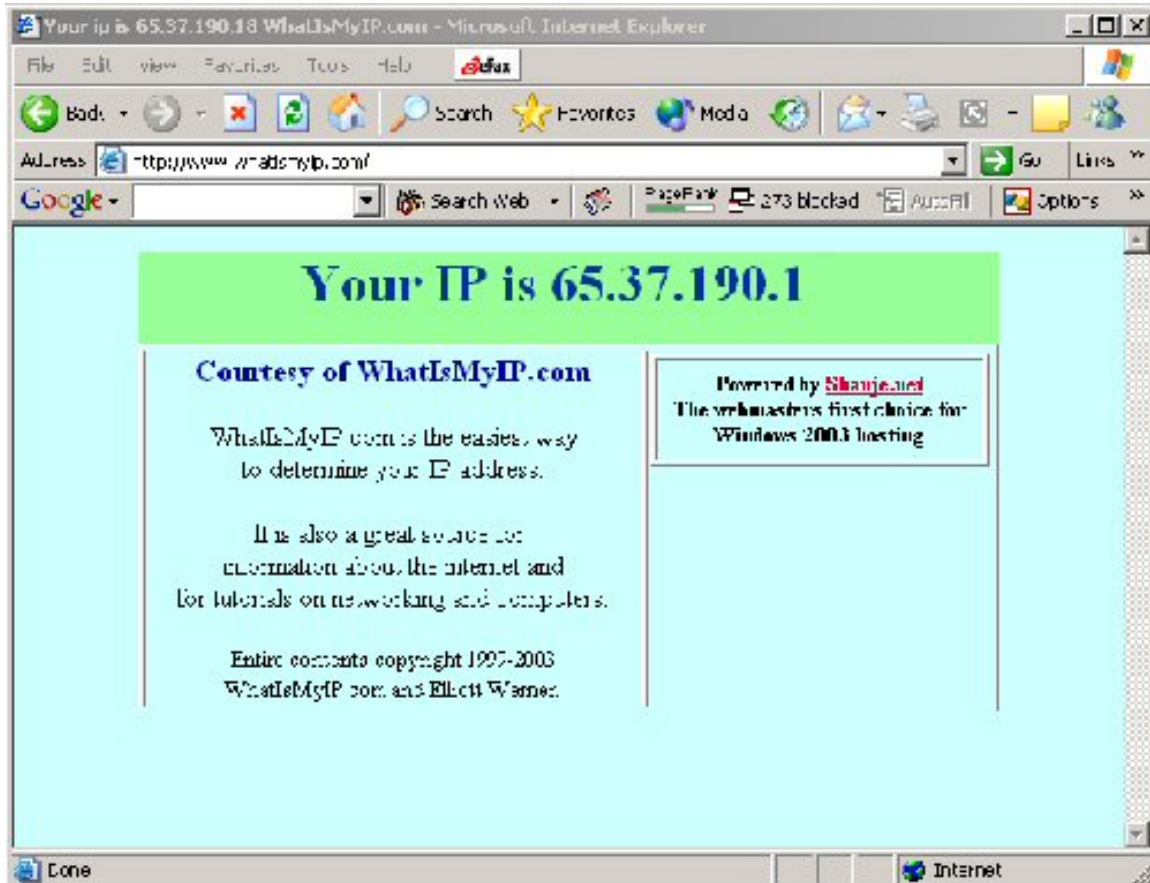
Note: due to the fact that every router is different, we will not be able to walk you through every router.

However we can recommend This Website, which might help you forward the ports on your router - They have many tips and tricks for forwarding ports as well as step by step walk-throughs for each type of router! - <http://www.portforward.com/routers.htm>

C. Now you will need to get the external IP address of your internet connection

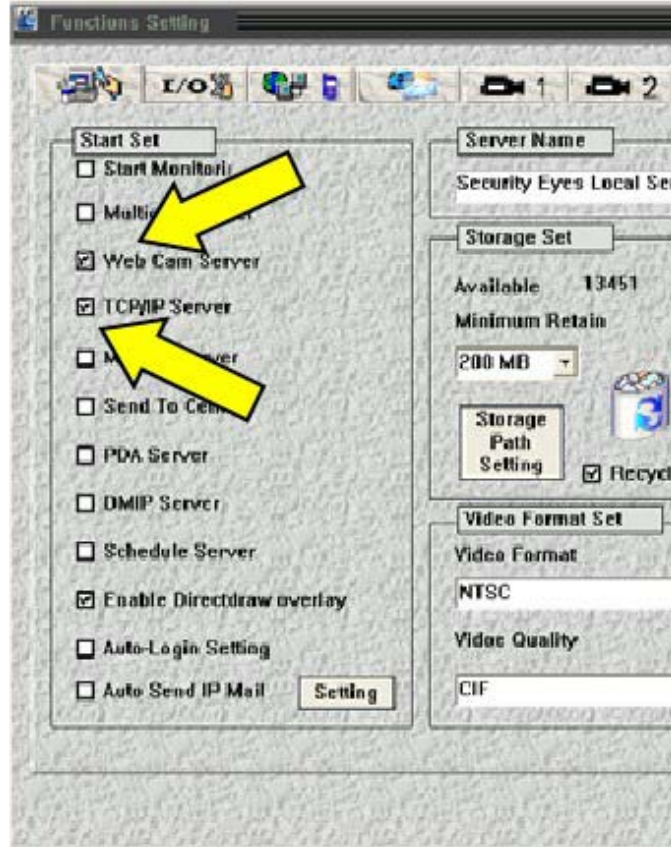
- A. Open a Web-Browser in Windows
- B. Browse to <http://whatismyip.com>
- C. Write down this IP address because you will use it for connecting to your DVR server

Note: You **MUST** have an active internet connection to complete this step.



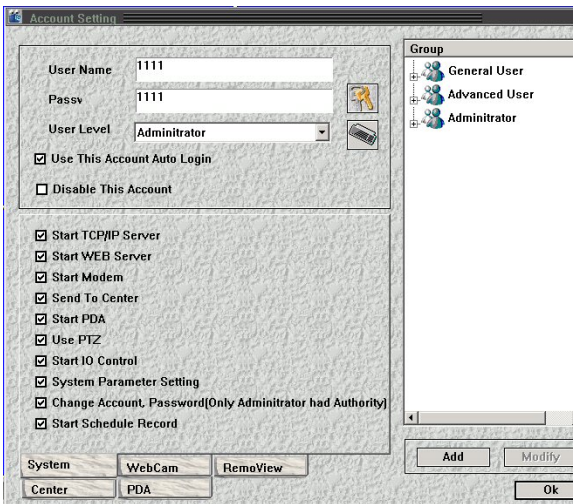
Security Eyes Pro Remote Connection Setup Manual

- D. After the Ports have been forwarded, on the DVR Server...Open System Settings Make sure that “Web Cam Server” and “TCP/IP Server” are checked.



Press OK at the Bottom Right, and Then Restart the Security Eyes Pro Server Program to apply the settings.

- E. Next, Enter the User Account Settings, to ensure that your User account is set up to use Web Server and TCP/IP Server.



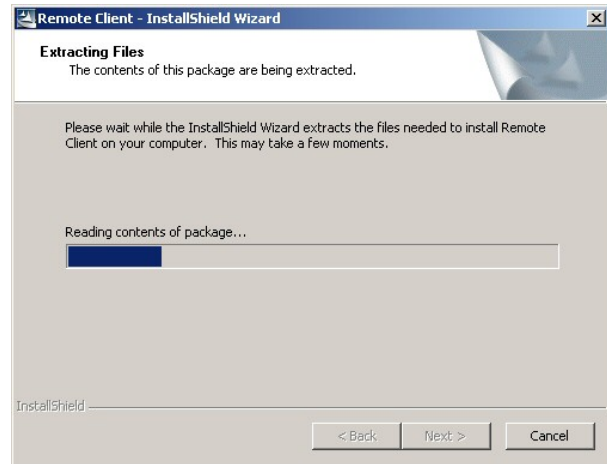
1. Select your User Account
2. Make sure there are Checks in the Boxes next to:
 - i. “Web Server”
 - ii. “TCP/IP Server”

F. On the Remote PC, insert the Security Eyes Pro CD-Rom and install the Remote Client Application

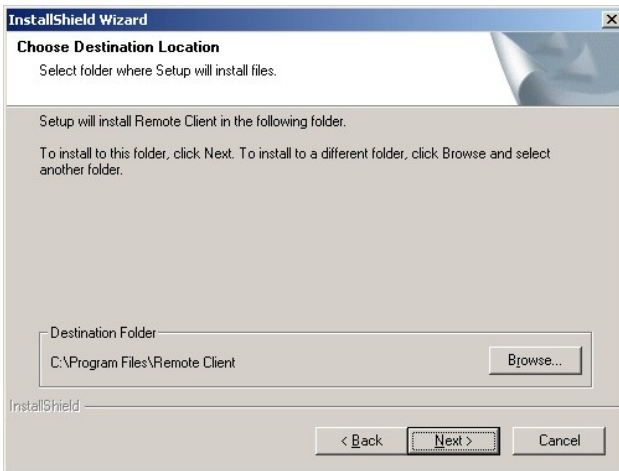


1. Click on SecurityEyes_Remote to begin installation

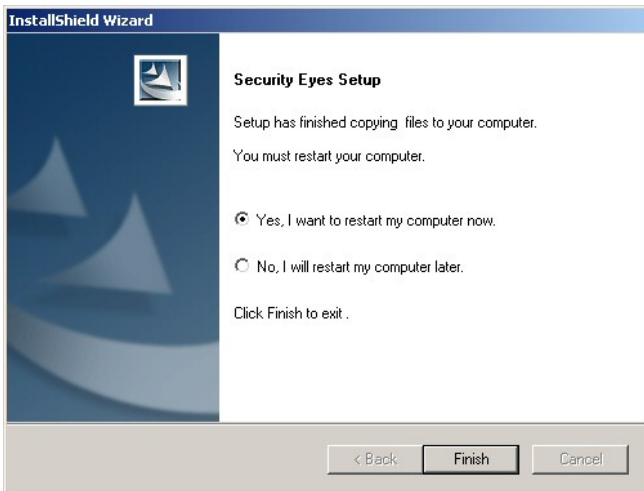
2. Security Eyes Pro InstallShield Wizard will begin.



3. Select a Location for the Installation, or just press "NEXT>" to continue

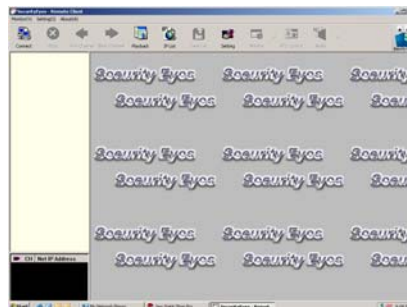


4. Note: YOU MUST Press “Continue Anyway” if you get the Windows XP Hardware Installation Warning Window.

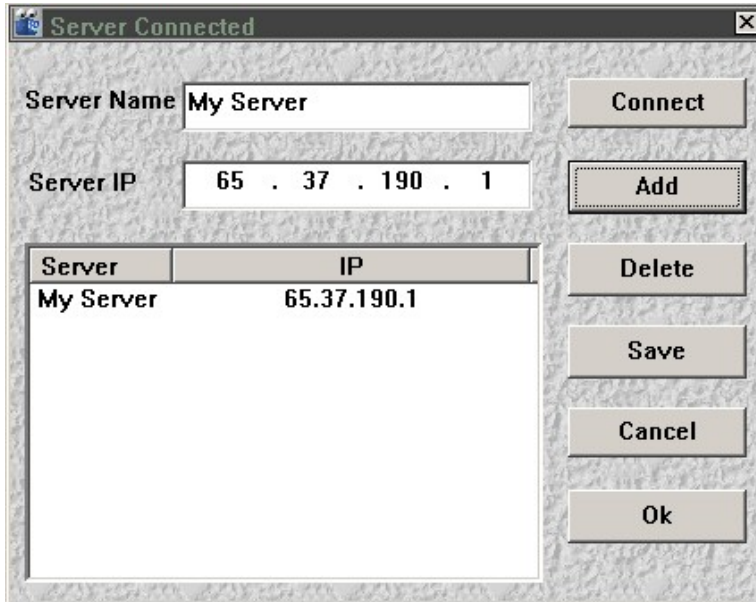


5. Installation is now complete! You must restart your PC before using the software!

- G. Once your PC Reboots... Click on the Start Menu → Programs → Remote Client → Remote Client**
- H. When the Remote Client Opens, press the “Connect” Button in the upper-left Corner.**



I. The Server Connection Window will open.



Server	IP
My Server	65.37.190.1

1. Type in a Name for your server, and enter the External IP Address (from Step C)
2. Press Add
3. Press Connect

The Account Login Box will open.

Type-in your User Name and Password (Same User Name and password that you log in to the local server with).



You Are Now Connected to your Server Remotely!

Note: If you have a Dynamic IP Address Remote Connection, your external IP address will change from time to time...it is recommended that you should upgrade your connection to a Static IP address (which will never change) Security Eyes Pro Systems will **NOT** operate with DDNS like <http://www.no-ip.com>