

Configuring Motion Detection for Security Eyes Pro Systems:

Brought to you by Ez-Toyz Inc. Service Dept.
Service@ez-toyz.com

Follow these steps to configure the Motion Detection Capabilities of the Security Eyes Software.

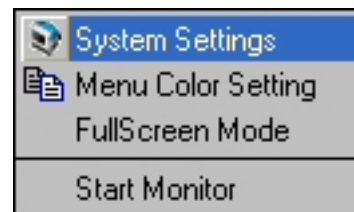
Motion Detection Sensitivity and Mask Settings

A. Open System Settings

1. Click on the “System Settings” Button



2. Select “System Settings” from the pull-down menu



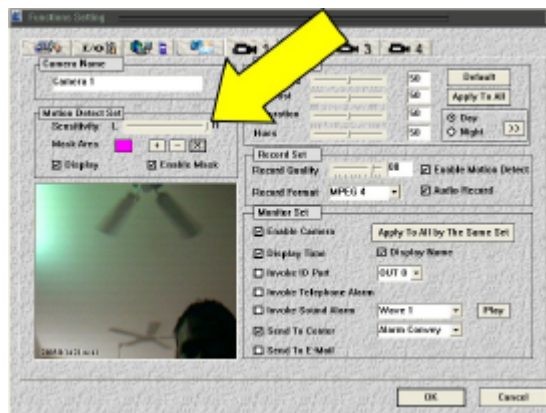
Note: If “System Settings” is not currently available in the pull-down menu, this means that the System Monitor function is enabled. Click on the “System Monitor” selection to disable the monitor, then start again.

B. Open the Camera’s Settings Page

1. Click the tab for the camera you want to adjust at the top of the settings window.
2. We can now adjust the sensitivity of motion detection, by moving the slider bar.



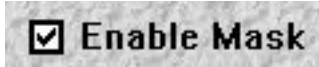
H = Higher Sensitivity: Less motion needed to begin recording
L = Lower Sensitivity: More movement needed before camera will record



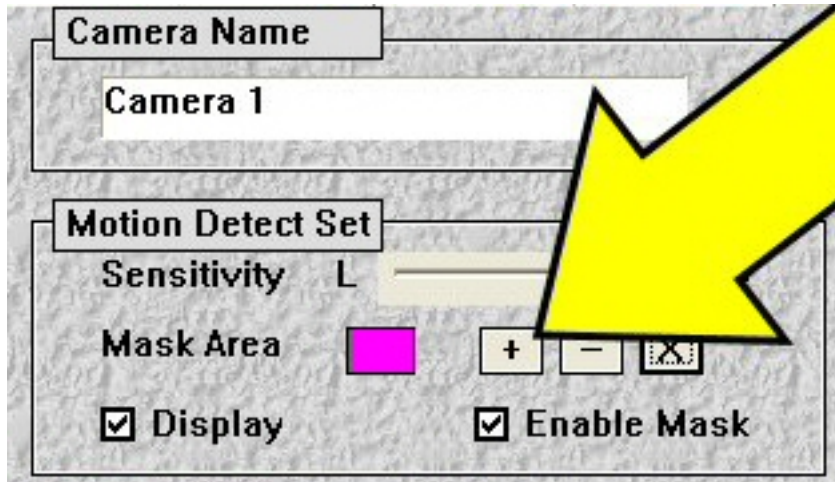
C. Setting a Mask Area

A Mask Area is used to select the areas that Security Eyes Pro will detect motion in. In our example, the camera is set up in a room with view of a ceiling fan. Under normal conditions, the ceiling fan would cause the system to record constantly. With the mask feature of Security Eyes Pro, we can prevent the ceiling fan from causing the system to constantly record.

1. Click the “**Enable Mask**” button to enable the Mask feature



2. Click the “+” button to add the mask area



3. Click and Drag across Camera view below to mask the area *you want to detect motion*

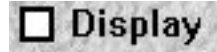


Notice: Now the movement of the fan will not cause the system to record.

Enabling Motion Detection Recording

D. Enable Motion Detection

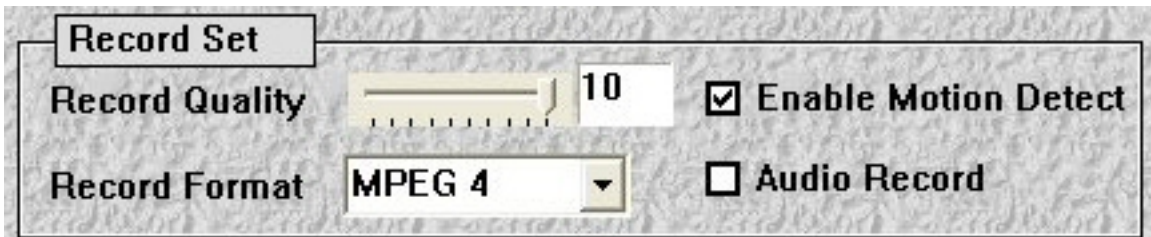
1. Un-check the “**Display**” Check-box in the Motion Detection Configuration settings of the Camera Settings page.



- a. This setting will display a ghost image of the Mask area in the normal camera view.

2. Check the “**Enable Motion Detect**” box in the Camera Settings

- b. Without this box checked, we will not be able to initiate motion detection recording.



Conclusion: Use a combination of the settings above to custom tailor the Motion Detection of your Security Eyes Pro Camera system to the needs of your particular installation. After configuring the sensitivity settings, now we need to enable Motion Detection Recording.

Consult the Security Eyes Pro Scheduling Manual to
Set up your schedule for Motion Detection Recording