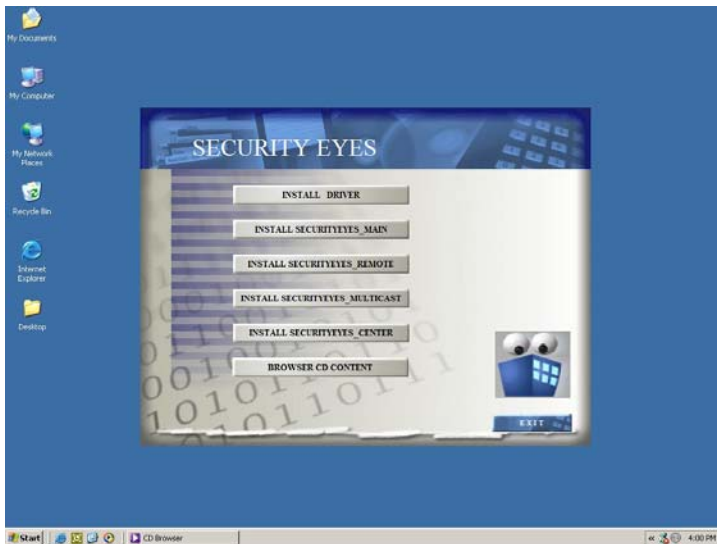


## **1-2-3 Security Eyes Pro** DVR System Basic Installation

### **1. Install the Drivers**

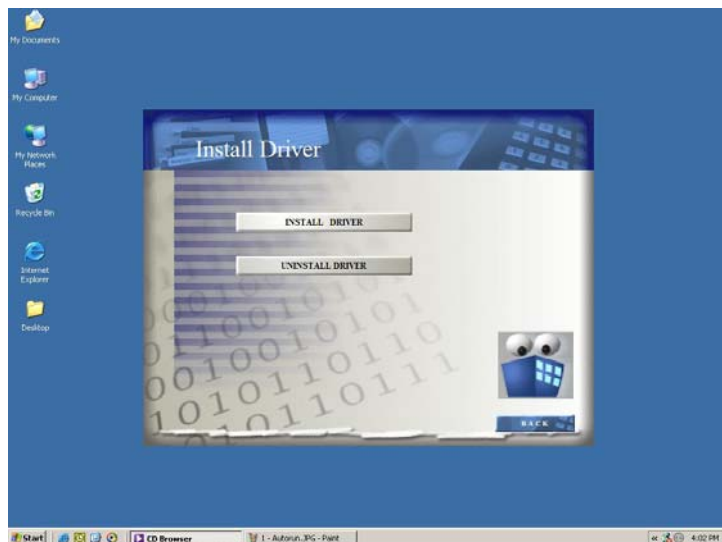
To begin installing the Security Eyes Pro CCTV DVR System, insert the CD into the CD-ROM Drive.



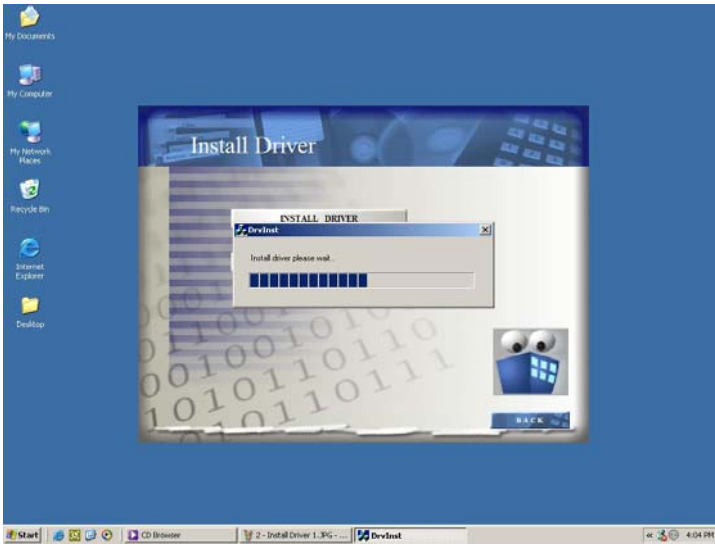
The program should start automatically after several seconds.

Select **“Install Driver”**  
(the top button on the window that opened.)

In the next window, select **“Install Driver”** again to begin the Driver installation.



**Security Eyes Pro 1-2-3 System Setup Manual**



Driver is currently installing.

After Install completes, a warning dialog pops up stating “Driver install will complete after rebooting.”

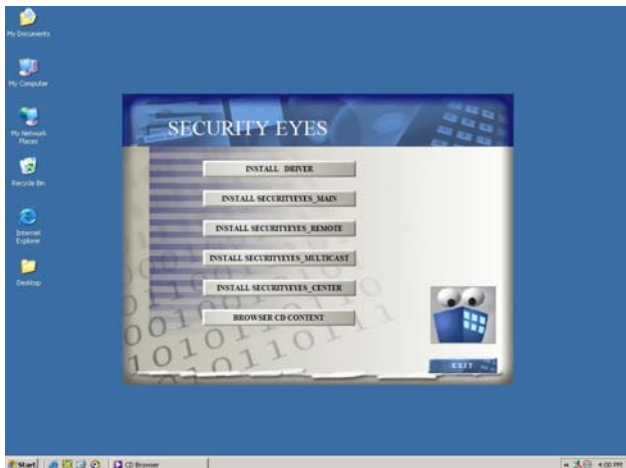
**Do not reboot PC at this time.**



**End Driver Installation**

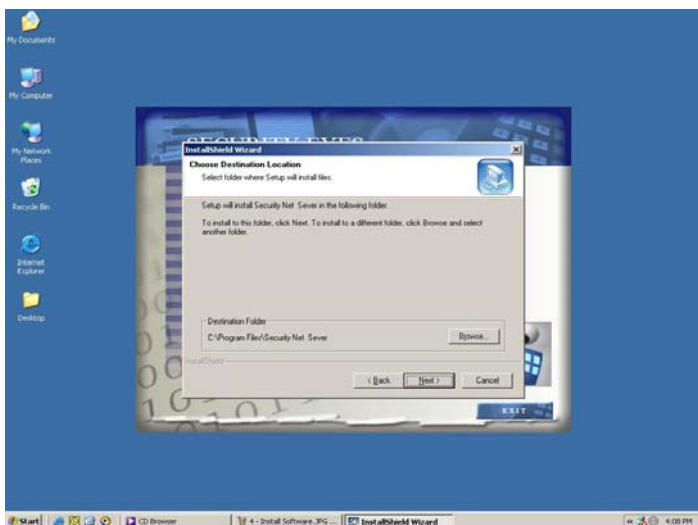
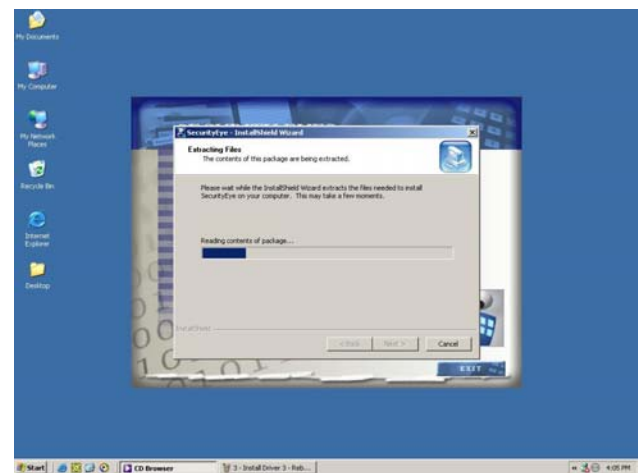
## Security Eyes Pro 1-2-3 System Setup Manual

### 2. Install the Software:



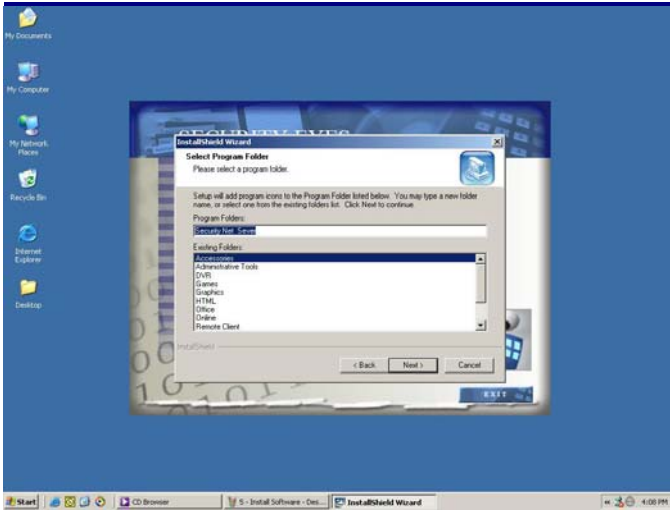
Select “Install SecurityEyes\_Main” this will begin the installation process.

Installation process has begun.



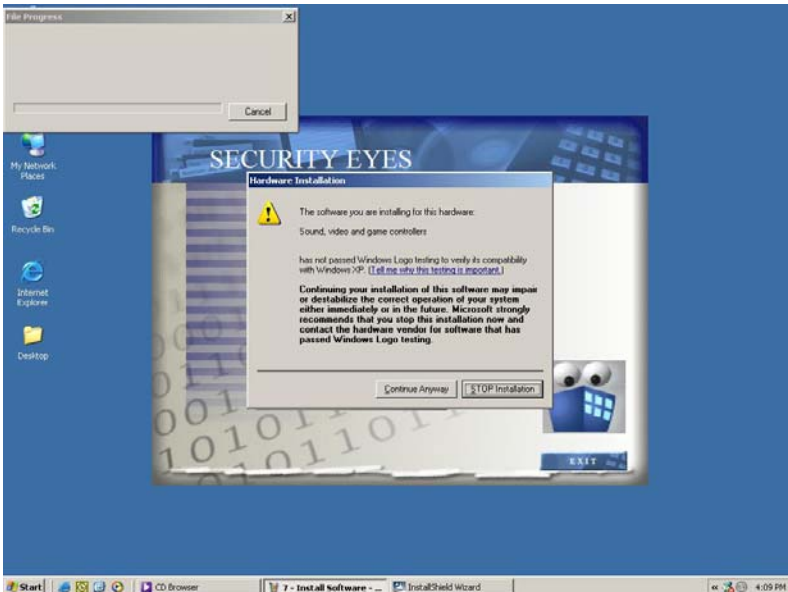
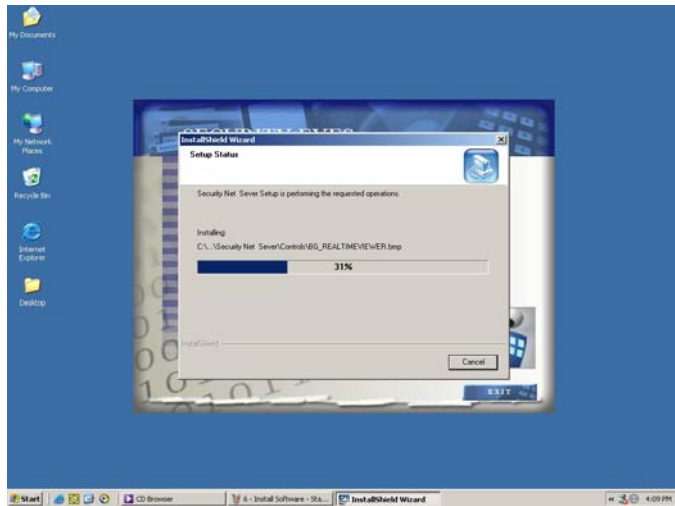
Select Installation Folder or simply press “Next >”

## Security Eyes Pro 1-2-3 System Setup Manual



Select Start Menu shortcut folder,  
or simply press “Next >”

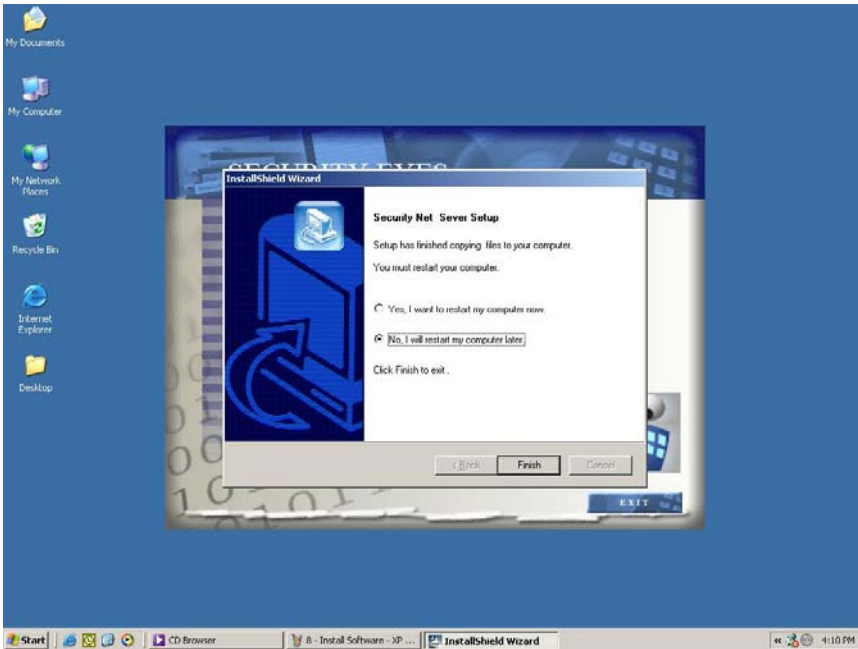
Installation Continues –  
Please wait.



In Windows XP, a  
“Hardware  
Installation –  
Windows XP Logo”  
Window will pop-up.

Press “Continue  
**A**n~~y~~way” to continue  
installation!

## Security Eyes Pro 1-2-3 System Setup Manual

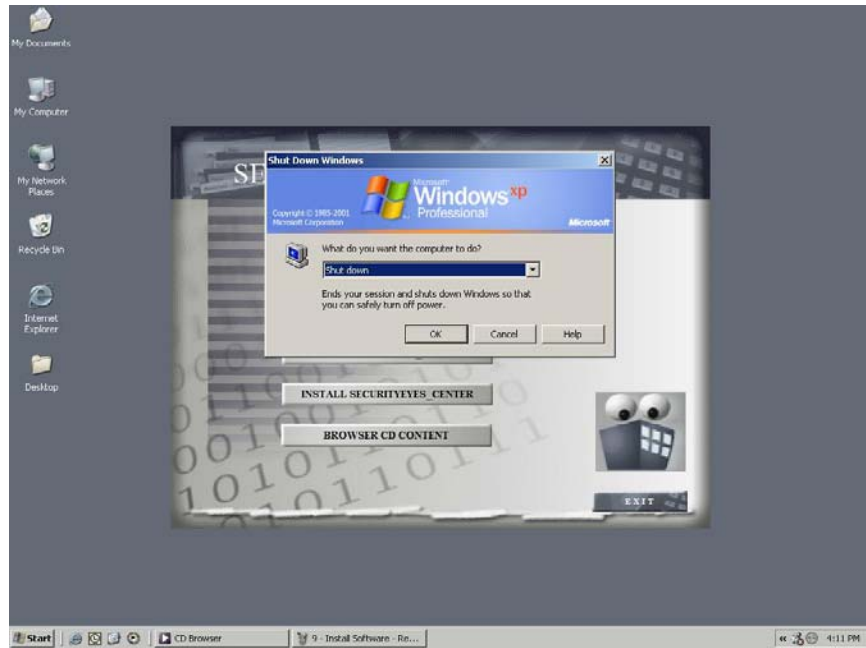


After Installation has completed, a window will pop-up stating that windows needs to reboot.

Select “NO” and press “NEXT”

Shut down the PC, the same way you would normally Shut it Down.

We will now install the DVR Card.



## End Software Installation

## Security Eyes Pro 1-2-3 System Setup Manual

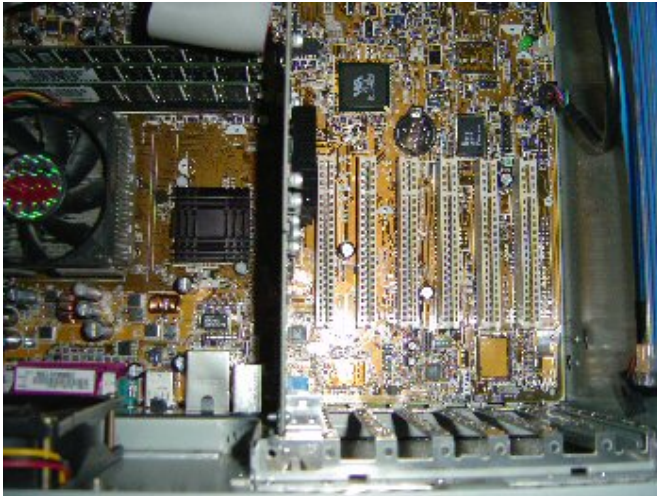
### 3. Install the Hardware



Most PCs have several screws holding the case together in the back of the PC. Remove these screws, and slide off the side of the PC Case.

**Note:** Your case design may differ. See the documentation from your PC for disassembly instructions.

After removing the side of the PC Case, turn computer on its side.



Notice the AGP Style Video Card should already be seated into the Brown AGP slot on the motherboard.

(Note: If you do not have this video card arrangement as shown, the PC may not meet the minimum specifications, and you may need to install in a different PC check PC Specifications.)

## Security Eyes Pro 1-2-3 System Setup Manual

---

The DVR Card should be installed into the PCI Card Slot closest to the CPU

(Note: PCI Slots are the off-white colored slots on the board)



Press the DVR Card Down Firmly and Secure it with a screw. Be sure, to firmly press the card down towards the motherboard after securing the screw (some cases may pull the card away from the board when the screw is tightened.)

To complete the installation, Simply replace the side-cover of the PC and secure it with the screws.

### **End Hardware Installation**

**Power On your PC and consult User's Manual  
for Basic System Configuration.**



**Security Eyes Pro 1-2-3 System Setup Manual**

---

---